

FLEXOR[®]

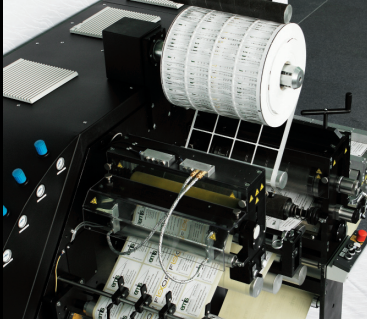
an emis brand

280C+
380C+
440C+

Slitter rewinders by FLEXOR[®]

innovators in slitting, rewinding and die cutting

Servo controlled waste rewind with pneumatic pressure roll



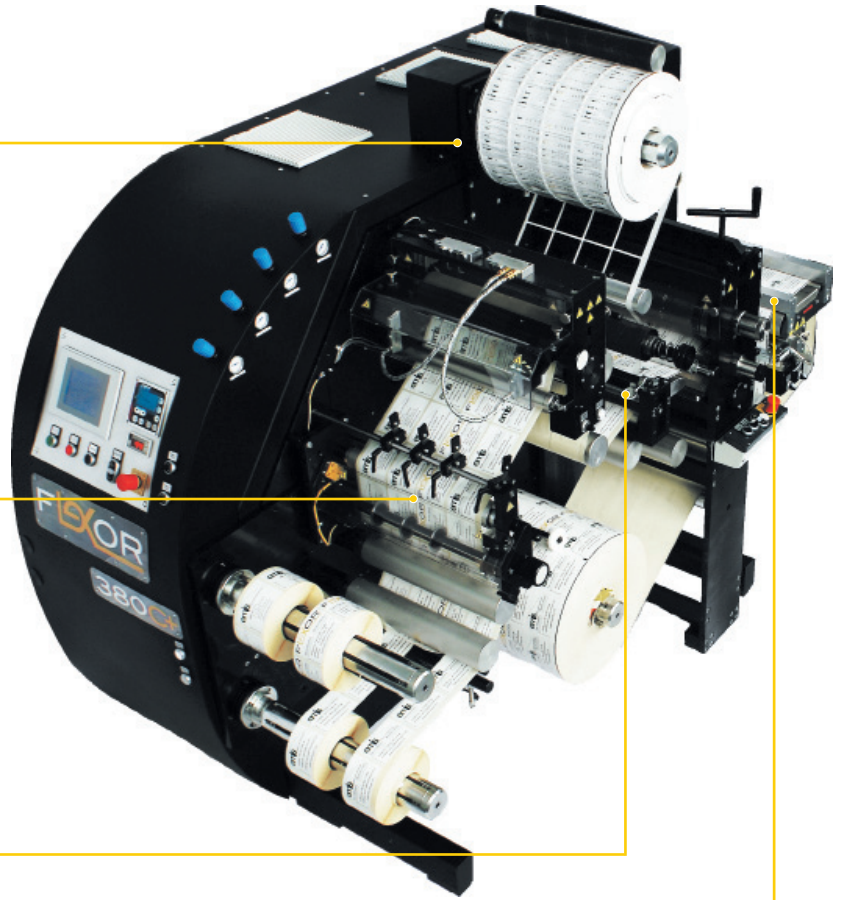
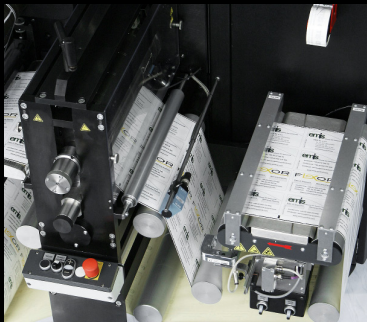
Shearing and razor blade cutting unit



Pneumatic nip roller station and label counter



Die cutting unit and BST web guiding system



innovations for tomorrow

www.flexor.pl





World leading suppliers. Webguide from BST, servo motors and inverters from LENZE, pneumatics from FESTO, sensors from SICK, pneumatic shafts from Double-E

Easy and intuitive operation. Easy operation and setup thanks to the user friendly programmed touchpanel supplied by LENZE as well as many easy to reach control buttons facilitating the operation during production runs. Automatic stop at: roll end, flag detection, matrix brake, splice detection, roll count, meter count or label count.

Web tension control. Servo motors used as a standard feature in all FLEXOR® machines enable the operator to set the web tension and relax, the FLEXOR® slitter rewinder does the rest. Servo motors and our own developed state-of-the-art PLC program enable the web tension to be automatically controlled and difficult matrix to be removed.

Wide range of additional and peripheral equipment. A wide range of peripheral and optional equipment gives you all possibilities to fulfill your customer requests: inkjet personalization, braille printing, inspection cameras, strobes, flag detectors, missing label detectors, static eliminator bars, stand alone unwinds for up to 50" rolls and many more.

Value for money. Low running costs, easy job change, up to 220m/min production speed, world leading suppliers, high end components, short delivery times.

Quality made in Poland. EMIS Sp. z o.o. with its many years of experience as machine manufacturer offers you all you need: High end products with high end components for a reasonable price. A family owned business build on German machine building traditions. Quality made in Poland!

Service and after sales management. Operational excellence by local service partners to keep your production up and running. Our experienced team can also help you in situation when an upgrade of your existing machine is needed. We are there for you, you just relax!

CE Certificate. All machines of the FLEXOR® series have been engineered according to the guidelines of the employer's liability insurance association and carry the CE symbol.

MORE STANDARD FEATURES

- Servo Motors as standard.** Fully servo motor equipped
- Webguide.** BST Webguide with display panel
- PLC controlled.** Fully electronic PLC control ensures user friendly and almost maintenance free production.
- Splice Table.** Adjustable pneumatic splice table to fit any label
- Slitting.** 3 Dienes shear cutting knives included, lateral register ± 7 mm
- Counters - fully electronic.** Labels, meters, rolls, hours, etc.
- Nip Roller Station.** Pneumatic Nip Roller Station
- Roll End Gripper.** Pneumatic Gripper for roll end
- Foot Pedal.** (stop/jog)
- Antistatic Brush.**

MORE POSSIBILITIES

- Magnetic Cylinder Size.** 8" (64T) - 24" (192T)
- Die cutting.** Die cutting (re-register ± 0.2 mm)
- Rewinder.** Additional rewinder with pneumatic spindle and own servo motor
- Cutting.** Crush cutting knife station, Razor cutting knife station
- Sensors.** Splice/Flag detection, missing label, matrix brake, transparent label sensor
- Matrix rewinder.** Own servo motor and pneumatic pressure roll
- Stroboscope with Camera.** Extra long web path
- Static eliminator bars.**
- Stand alone Unwinder.** Rolls of up to 40"
- Inkjet personalization, camera inspection, braille printheads** and many more... just ask!

FLEXOR	280	380	440
max. web width (mm)	280	380	440
max. unwind dia. (mm)	750	750	750
max. rewind dia. (mm)	550	550	550
max. machine speed (m/min)	220	220	220
max. /min. mag. cylinder size (inch)	8/20	10/22	10/24
die cutting (to register: ± 0.2 mm)	Yes (Yes)	Yes (Yes)	Yes (Yes)
dimensions LxWxH (mm)	2050x1250x1850	2050x1300x1850	2080x1400x1850

www.flexor.pl

your local agent:

EMIS Ltd., Farysa 33, Warsaw 01-971, Poland
 phone: +48 22 560 30 80 web: www.flexor.pl e-mail: info@flexor.pl