

FLEXOR[®]

an emis brand

520C+

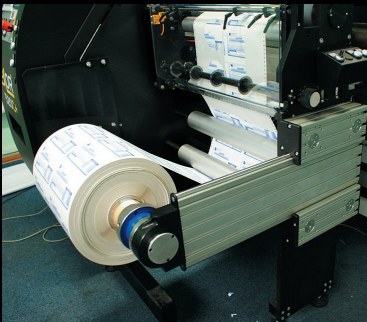
Slitter rewinders by FLEXOR[®]

innovators in rewinding and die cutting

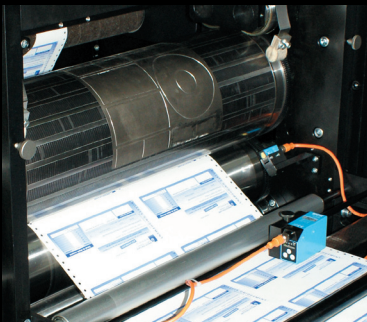
Panel mounted tension control system using tensometers and pneumatic brake on unwind



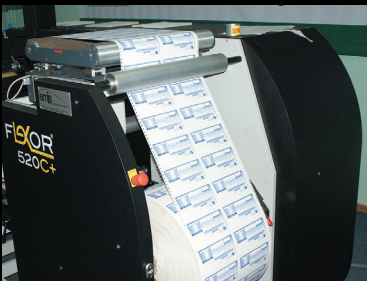
Double sided support for rewind unit giving stability at working widths of up to 520mm



Die cutting unit for cylinders of up to 28" with register control for die cutting of preprinted material



Unwind for rolls of up to 1270mm (50") with motor driven lifting arms



innovations for tomorrow

www.flexor.pl



World leading suppliers. Webguide from BST, servo motors and inverters from LENZE, pneumatics from FESTO, sensors from SICK, pneumatic shafts from Double-E, tension control system by CMC.

Easy and intuitive operation. Easy operation and setup thanks to the user friendly programmed touchpanel supplied by LENZE as well as many easy to reach control buttons facilitating the operation during production runs. Automatic stop at: roll end, flag detection, splice detection, roll count, meter count or label count.

Web tension under control. Servo motors used as a standard feature in all FLEXOR® machines enable the operator to set the web tension and relax, the FLEXOR® slitter rewinder does the rest. A sophisticated tension control system using the latest tensometer technology allows constant web tension throughout the whole production run.

Wide range of additional and peripheral equipment. A wide range of peripheral and optional equipment gives you all possibilities to fulfill your customer requests: inkjet personalization, braille printing, inspection cameras, strobes, flag detectors, missing label detectors, static eliminator bars and many more.

Value for money. Low running costs, easy job change, up to 220m/min production speed, world leading supplier, high end components, short delivery times.

Quality made in Poland. EMIS Sp. z o.o. with its many years of experience as a machine manufacturer offers you all you need: High end products with high end components for a reasonable price. A family owned business build on German machine building traditions. Quality made in Poland!

Service and after sales management. If there is a need to help you our experienced engineers will be at your premises as fast as possible to help you keep production running. Our experienced team can also help you in situation when an upgrade of your existing machine is needed. We are there for you, you just relax!

CE Certificate. All machines of the FLEXOR® series have been engineered according to the guidelines of the employer's liability insurance association and carry the CE symbol.

MORE STANDARD FEATURES

- Servo Motors as standard.** Fully Servo Motor equipped
- Webguide:** BST Webguide with display panel
- PLC controlled:** fully electronic PLC control ensures user friendly and almost maintenance free production.
- Slitting:** 3 Dienes shear cutting knives included, lateral register ± 7 mm
- Counters - fully electronic:** labels, meters, rolls, hours, etc.
- Nip Roller Station:** Pneumatic Nip Roller Station
- Roll End Gripper:** Pneumatic Gripper for roll end
- Dual-sided support of rewind:** Stability at working widths of up to 520mm
- Tension Control System:** Panel Control Tension setting
- Three control panels:** Ensuring easy operation we included three control panels
- Foot Pedal** (stop/jog)

MORE POSSIBILITIES

- Magnetic Cylinder Size:** up to 28" (224Teeth)
- Die cutting:** Die cutting (to register ± 0.2 mm)
- Rewinder:** Additional rewinder with pneumatic spindle and servo motor
- Cutting:** Crush cutting knife station, Razor cutting knife station
- Sensors:** Splice/Flag detection, missing label, matrix brake, transparent label
- Matrix rewinder** with own servo motor and pneumatic pressure roll
- Electrical ionization unit and static eliminator bars**
- Inkjet printheads, camera inspection, braille printheads** and many more... just ask!

FLEXOR 520C+

	Metric	Imperial/US
max. web width (mm)	520mm	20.5 inch
max. unwind dia. (mm)	1270mm	50 inch
max. rewind dia. (mm)	750mm	29.5 inch
max. mechanical machine speed	220 m/min	730 ft/min
die cutting (to register: ± 0.2 mm / 0.008inch)	Yes (Yes)	Yes (Yes)
dimensions LxWxH (mm)	3100x2300x2100 mm	122x91x83 inch

www.flexor.pl

EMIS sp. z.o.o, Farysa 33, Warsaw 01-971, Poland
 phone: 0048 22 560 30 80 web: www.flexor.pl e-mail: info@flexor.pl

your agent: